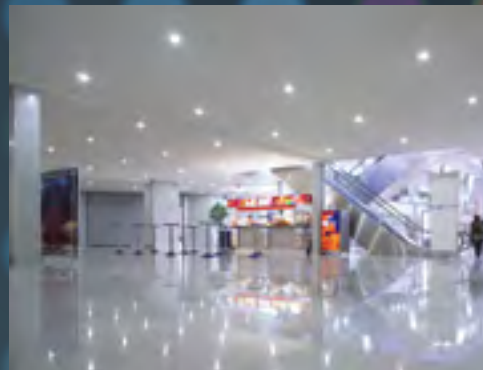
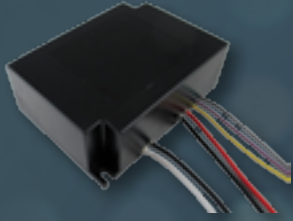




PHIHONG LED DRIVERS

Engineered to last





About Phihong

Since 1972, Phihong has been at the forefront of technological innovation in power electronics manufacture and design. By employing the latest in technology and research and development, Phihong's customers have continued to expect and receive the best possible products with on-time delivery and exceeding worldwide standards in efficiency and safety.

With a truly international span covering North America, Europe, and Asia, Phihong has design labs and local sales support centers in California, New York, The Netherlands, China, Japan, and Taiwan; Phihong is a top choice for OEMs serving datacom, telecom, personal electronics, networking, lighting, and industrial markets.

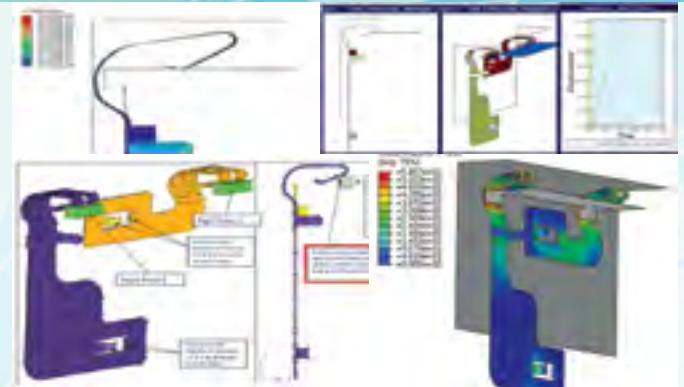
Focusing on engineering excellence, product reliability, and a commitment to customer service, sales have continued to grow proving a continued dominance in the power adapter industry with a broad line of cost competitive highly efficient products that comply with international standards.

OEMs also choose Phihong to partner on custom projects to meet the needs of very special programs not satisfied by the standard product offerings. With a long history in both standard and custom power designs, Phihong has one of the market's broadest lines of cost-competitive and highly reliable power solutions.

QUALITY

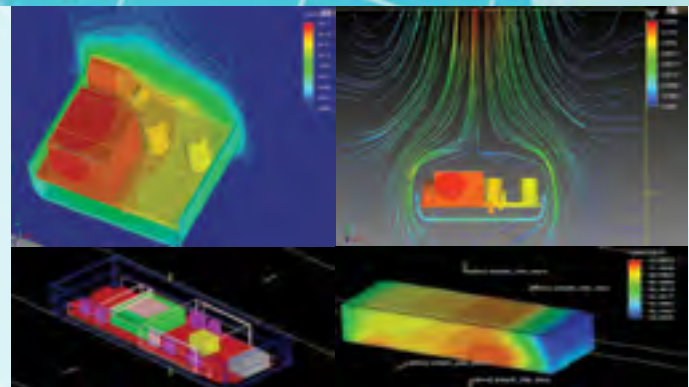
TECHNOLOGY

DEMONSTRATING ENGINEERING EXCELLENCE



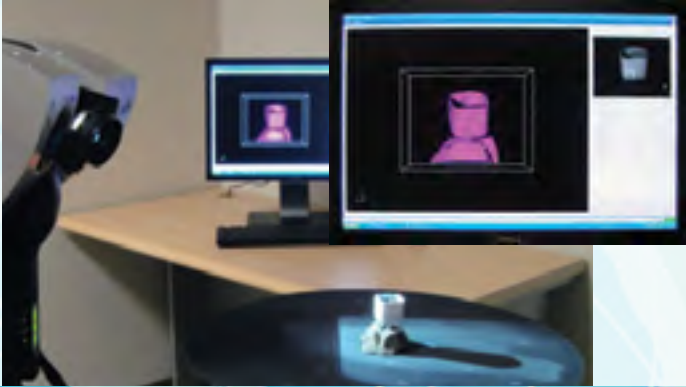
Finite Element Analysis

- Virtually stress test materials in the design
- Reduce the number of prototypes
- Dramatically increase speed from development to production



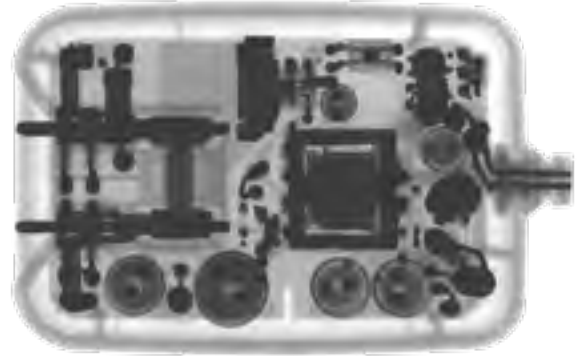
Thermal Simulation

- Virtually simulate thermal stress tests for individual parts to full PCBs
- Analyze the heating and cooling of parts in relation to each other to accurately diagnose conflicts before they occur
- Reduce the number of prototypes needed for real time thermal stress tests



3D Scanning

- Verify prototype case tooling matches design
- Monitor structural changes accurately following stress tests for more detailed analysis
- Enhances integration with complex parts



Non-Destructive Failure Analysis

- Analyze internal structure for quality without damage to external packaging
- Verify soldering and component connections are accurate and appropriate



Process Automation

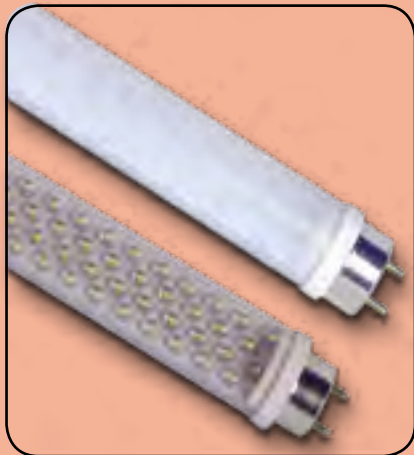
- Increases production speeds, capacity, and overall product quality
- Minimizes costs as the cost of labor increases and reducing the need for manual processes



Automated Optical Inspection

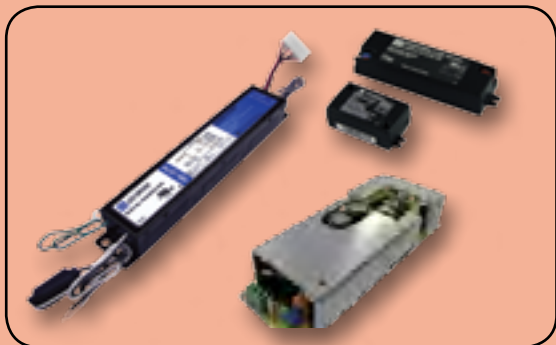
- All defects found; nothing overlooked by human error
- Quantitative measure instead of operator judgement using a complex algorithm to detect faults

OEM LIGHTING SOLUTIONS



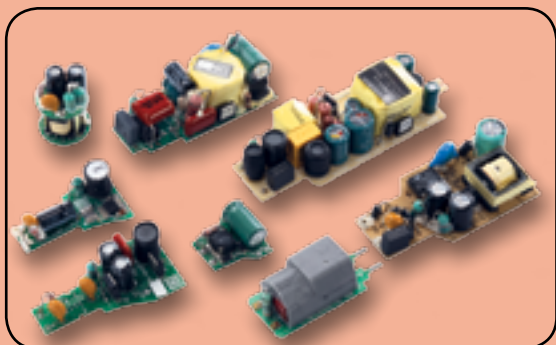
Linear Fluorescent Replacement

- Retrofit kits for existing lamp fixtures
- 2 foot, 4 foot, and 8 foot T8, T10, and T12 replacement bulbs available
- Warm or cool lamp colors
- Universal input compatible
- UL rated enclosure



LED Drivers

- Available in Constant Current/Constant Voltage
- Indoor/Outdoor or open frame design
- Standard dimming on outdoor units
- Low profile design for ease of integration
- Dimming via 0-10V, DALI, Zigbee, Zwave or 802.11 wireless

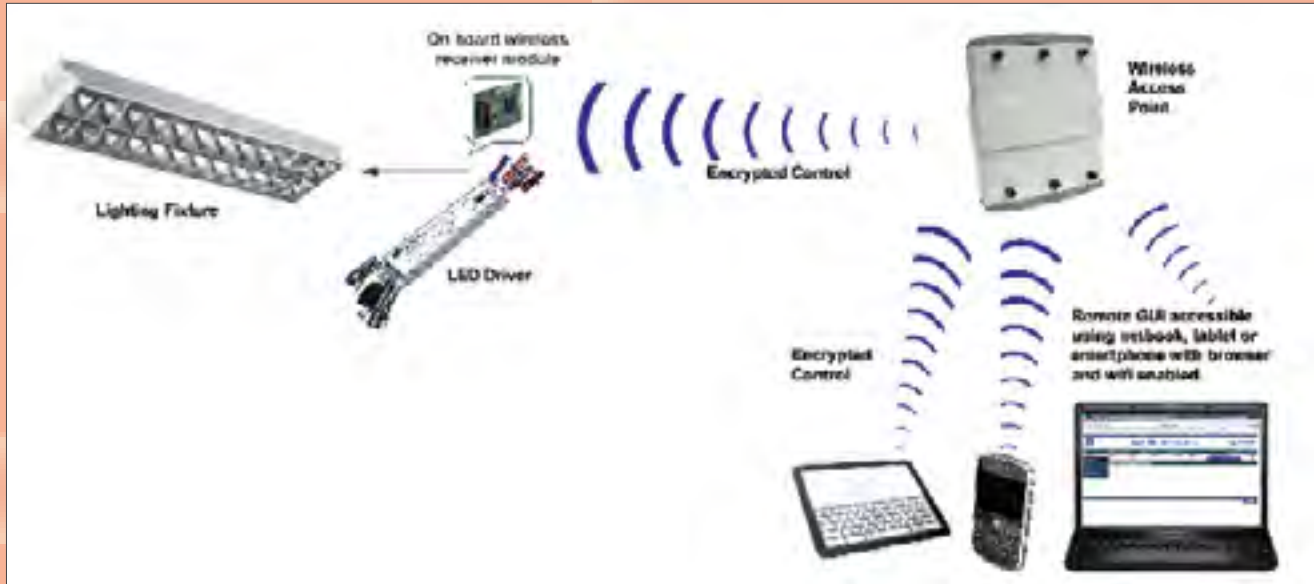


Bulb Replacement LED Drivers

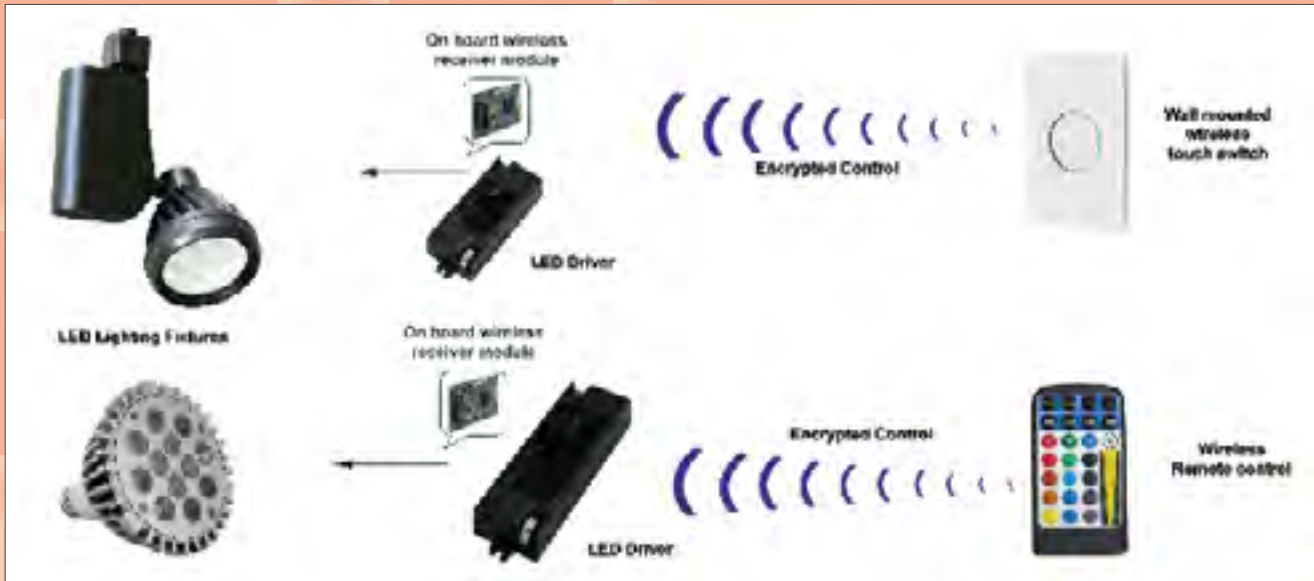
- Incandescent and CFL bulb retrofits
- Universal AC input
- Low profile PCB design for ease of integration
- Minimizes need for extra components
- MR16, E14, E17, GU10 and E27
- Triac and Low Voltage Dimming

Flight	Time	Class	Destination
PH 3030	20:45	51-80	Bologna
PH 3030	20:50	51-80	B30 Krasnodar
PH 3030	20:55	51-80	A10 Bangkok
PH 3030	21:30	51-80	A04 Moscow
PH 3030	21:35	51-80	A02 Luxor

Wireless Control



Remote and Touch Controls



Voice Activation Control



COMMERCIAL LED DRIVERS

Watts	Constant Current Constant Voltage	Dimming		Channels	Model Series	Page
		No	0-10V			
12W	Current	●		1	PDA012 	7
25W	Current	●	●	1	PDA025 	7
	Voltage	●		1	PDA025 	8
26W	Current	●	●	2	PDA026 	8
37W	Current		●	1	PDA037 	8
38W	Current	●	●	3	PDA038 	8
40W	Current	●	●	1	PDA040 	9
	Voltage	●		1	PDA040 	9
	Current	●	●	1	PDA041 	9
	Voltage	●		1	PDA041 	9
50W	Current		●	4	PDA050 	10
51W	Current	●	●	2	PDA051 	10

Watts	Constant Current Constant Voltage	Dimming		Channels	Model Series	Page
		No	0-10V			
60W	Current	●	●	1	PDA060 	10
	Voltage	●		1	PDA060 	11
72W	Current	●	●	1	PDA072 	11
	Voltage	●	●	1	PDA072 	11
75W	Current	●	●	3	PDA075 	11
80W	Current	●	●	1	PDA080 	12
	Voltage	●	●	1	PDA080 	12
90W	Voltage		●	1	PSM090 	12
100W	Current	●	●	1	PDA100 	12
	Voltage	●		1	PDA100 	13
125W	Current	●	●	1	PDA125 	13
	Voltage	●	●	1	PDA125 	14
150W	Current	●	●	1	PDA150 	14

COMMERCIAL LED DRIVERS

Standard Features

- Power Factor >0.90 and THD <20%

- Class 2 Output per UL1310

- ≥ 5 Year Warranty

12W

Features

- 220VAC to 277VAC input
- 100K hours lifetime for 'H' models
- IP20
- 8 year warranty
- Tc -40 °C to 80 °C
- EMI Class A



132mm x 30mm x 22mm



Rated Power	Dimmable	Nominal Output Current	DC Output Voltage		Typical Efficiency	Model Name
			Min.	Max		
12W	No	350mA	20V	34.3V	75%	PDA012A-350C-H

12W

Features

- 120VAC input
- 100K hours lifetime for 'H' models
- IP20
- 8 year warranty
- Tc -40 °C to 80 °C
- EMI Class A



132mm x 30mm x 22mm



Rated Power	Dimmable	Nominal Output Current	DC Output Voltage		Typical Efficiency	Model Name
			Min.	Max		
12W	No	350mA	20V	34.3V	77%	PDA012B-350C-H

25W

Features

- 120VAC to 277VAC input
- IP67
- Tc -40 °C to 90 °C
- EMI Class B



80mm x 78mm x 25.2mm



Rated Power	Dimmable	Nominal Output Current	DC Output Voltage		Typical Efficiency	Product Name
			Min.	Max.		
25W	No	450mA	19V	56V	84%	PDA025B-450B
		700mA	12V	36V	84%	PDA025B-700B
		1040mA	8V	24V	83%	PDA025B-1A0B
		1400mA	6V	18V	82%	PDA025B-1A4B
		1750mA	5V	14V	82%	PDA025B-1A8B
		2100mA	4V	12V	81%	PDA025B-2A1B
25W	0-10V	450mA	19V	56V	84%	PDA025W-450B
		700mA	12V	36V	84%	PDA025W-700B
		1040mA	8V	24V	83%	PDA025W-1A0B
		1400mA	6V	18V	82%	PDA025W-1A4B
		1750mA	5V	14V	82%	PDA025W-1A8B
		2100mA	4V	12V	81%	PDA025W-2A1B

www.phihong.com/LED

25W

Features

- 120VAC to 277VAC input
- IP67
- Tc -40 °C to 90 °C
- EMI Class B



80mm x 78mm x 25.2mm



Rated Power	Dimmable	Nominal DC Output Voltage	DC Output Current		Typical Efficiency	Model Name
			Min.	Max.		
25W	No	24V	0A	1.04A	84%	PDA025B-24VB
		48V	0A	0.52A	84%	PDA025B-48VB

26W

2 Channels

Features

- 120VAC to 277VAC input
- IP65
- Tc -20 °C to 65 °C
- EMI Class A



242mm x 43.5mm x 30.5mm



Rated Power	Dimmable	Nominal Output Current Per Channel	DC Output Voltage		Typical Efficiency	Model Name
			Min.	Max.		
26W	No	350mA	27V	36V	86%	PDA026B-D350G
26W	0-10V	350mA	27V	36V	86%	PDA026W-D350G

37W

4 Channels

Features

- 120VAC to 277VAC input
- IP65
- Tc 0 °C to 70 °C
- EMI Class A



242mm x 43.5mm x 30.5mm



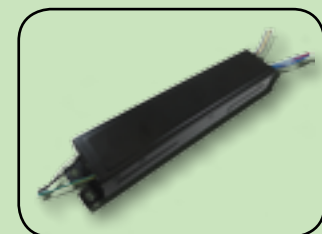
Rated Power	Dimmable	Nominal Output Current Per Channel	DC Output Voltage		Typical Efficiency	Model Name
			Min.	Max.		
37W	0-10V	350mA	22V	26.5V	85%	PDA037W-350G

38W

3 Channels

Features

- 120VAC to 277VAC input
- IP65
- Tc -20 °C to 70 °C
- EMI Class A



242mm x 43.5mm x 30.5mm



Rated Power	Dimmable	Nominal Output Current Per Channel	DC Output Voltage		Typical Efficiency	Model Name
			Min.	Max.		
38W	No	350mA	27V	36V	86%	PDA038B-T350G
38W	0-10V	350mA	27V	36V	86%	PDA038W-T350G

For more information including product datasheets visit the website www.phihong.com/LED

COMMERCIAL LED DRIVERS

Standard Features

- Power Factor >0.90 and THD <20%

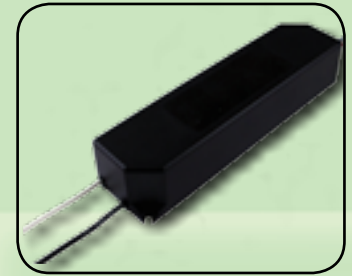
- Class 2 Output per UL1310

- 5 Year Warranty

40W

Features

- 120VAC to 277VAC input
- IP67
- Tc -40 °C to 90 °C
- EMI Class B



162.5mm x 43mm x 32mm



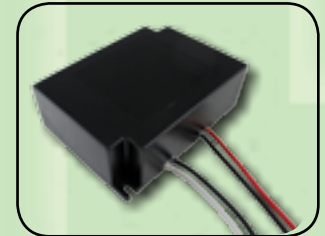
Rated Power	Dimmable	Nominal Output Current	DC Output Voltage		Typical Efficiency	Model Name
			Min.	Max.		
38W	No	700mA	37.8V	54V	89%	PDA040B-700B
40W		1050mA	26.6V	38V	88.5%	PDA040B-1A0B
37W		1400mA	18.2V	26V	88%	PDA040B-1A4B
38W	0-10V	700mA	37.8V	54V	89%	PDA040W-700B
40W		1050mA	26.6V	38V	88.5%	PDA040W-1A0B
37W		1400mA	18.2V	26V	88%	PDA040W-1A4B

Rated Power	Dimmable	Nominal DC Output Voltage	DC Output Current		Typical Efficiency	Model Name
			Min.	Max		
40W	No	24V	0A	1.67A	88%	PDA040B-24VB
		48V	0A	0.83A	89%	PDA040B-48VB

40W

Features

- 120VAC to 277VAC input
- IP67
- Tc -40 °C to 90 °C
- EMI Class B



95mm x 71 mm x 32mm



Rated Power	Dimmable	Nominal Output Current	DC Output Voltage		Typical Efficiency	Model Name
			Min.	Max.		
38W	No	700mA	37.8V	54V	89%	PDA041B-700B
40W		1050mA	26.6V	38V	88.5%	PDA041B-1A0B
37W		1400mA	18.2V	26V	88%	PDA041B-1A4B
38W	0-10V	700mA	37.8V	54V	89%	PDA041W-700B
40W		1050mA	26.6V	38V	88.5%	PDA041W-1A0B
37W		1400mA	18.2V	26V	88%	PDA041W-1A4B

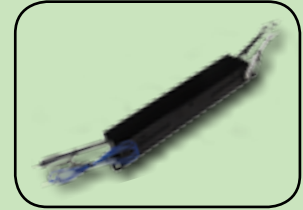
Rated Power	Dimmable	Nominal DC Output Voltage	DC Output Current		Typical Efficiency	Model Name
			Min.	Max		
40W	No	24V	0A	1.67A	88%	PDA041B-24VB
		48V	0A	0.83A	89%	PDA041B-48VB

www.phihong.com/LED

50W

Features

- 120VAC to 277VAC input
- IP65
- 4 constant-current outputs
- Tc 0 °C to 70 °C
- EMI Class A



242mm x 43.5mm x 30.5mm



Rated Power	Dimmable	Nominal Output Current Per Channel	DC Output Voltage		Typical Efficiency	Model Name
			Min.	Max.		
50W	0-10V	450mA	22V	26.5V	86%	PDA050W-450G

51W

2 Channels

Features

- 120VAC to 277VAC input
- IP65
- Tc 0 °C to 70 °C
- EMI Class A



242mm x 43.5mm x 30.5mm

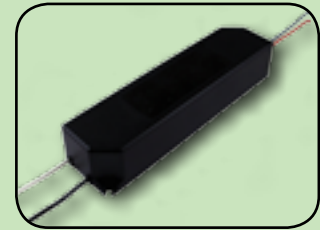


Rated Power	Dimmable	Nominal Output Current Per Channel	DC Output Voltage		Typical Efficiency	Model Name
			Min.	Max.		
51W	No	700mA	30V	36V	83%	PDA051B-700G
51W	0-10V	700mA	30V	36V	85%	PDA051W-700G

60W

Features

- 120VAC to 277VAC input
- IP67
- Tc -40 °C to 80 °C
- EMI Class B



162.5mm x 43mm x 32mm



Rated Power	Dimmable	Nominal Output Current	DC Output Voltage		Typical Efficiency	Model Name
			Min.	Max.		
60W	No	700mA	60V	85.7V	91%	PDA060B-700B*
		1070mA	39.2V	56V	91%	PDA060B-1A0B
		1400mA	30V	42.9V	90%	PDA060B-1A4B
		1600mA	26.3V	37.5V	90%	PDA060B-1A6B
		2000mA	21V	30V	89%	PDA060B-2A0B
60W	0-10V	700mA	60V	85.7V	91%	PDA060W-700B*
		1070mA	39.2V	56V	91%	PDA060W-1A0B
		1400mA	30V	42.9V	90%	PDA060W-1A4B
		1600mA	26.3V	37.5V	90%	PDA060W-1A6B
		2000mA	21V	30V	90%	PDA060W-2A0B

Note: *Non Class 2 Output per UL1310

Rated Power	Dimmable	Nominal DC Output Voltage	DC Output Current		Typical Efficiency	Model Name
			Min.	Max		
60W	No	24V	0A	2.5A	89%	PDA060B-24VB
		48V	0A	1.25A	91%	PDA060B-48VB

For more information including product datasheets visit the website www.phihong.com/LED

COMMERCIAL LED DRIVERS

Standard Features

- Power Factor >0.90 and THD <20%

- Class 2 Output per UL1310

- 5 Year Warranty

72W

Features

- 120VAC to 277VAC input
- IP65
- Tc -40 °C to 80 °C
- EMI Class B



242mm x 43.5mm x 30.5mm



Rated Power	Dimmable	Nominal Output Current	DC Output Voltage		Typical Efficiency	Model Name
			Min.	Max		
72W	No	3000mA	12V	24V	85%	PDA072B-3A0G
72W	0-10V	3000mA	12V	24V	85%	PDA072W-3A0G

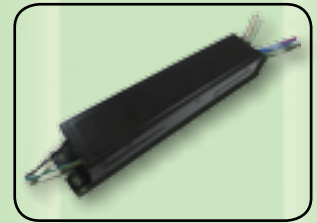
Rated Power	Dimmable	Nominal DC Output Voltage	DC Output Current		Typical Efficiency	Model Name
			Min.	Max		
72W	No	24V	0A	3.0A	87%	PDA072B-24VG
	0-10V	24V	0A	3.0A	87%	PDA072W-24VG

75W

3 Channels

Features

- 120VAC to 277VAC input
- IP66
- Tc 0 °C to 70 °C
- EMI Class



242mm x 43.5mm x 30.5mm



Rated Power	Dimmable	Nominal Output Current Per Channel	DC Output Voltage		Typical Efficiency	Model Name
			Min.	Max.		
75W	No	700mA	28V	33V	87%	PDA075B-T700G
75W	0-10V	700mA	28V	33V	87%	PDA075W-T700G

80W

Features

- 120VAC to 277VAC input
- IP67
- Tc -40 °C to 80 °C
- EMI Class B



242mm x 43.5mm x 30.5mm



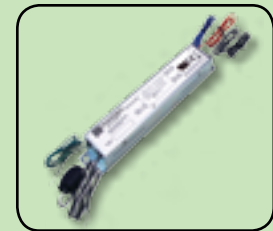
Rated Power	Dimmable	Nominal Output Current	DC Output Voltage		Typical Efficiency	Model Name
			Min.	Max		
80W	No	700mA	90V	114V	85%	PDA080B-700G*
		1050mA	55V	76V	85%	PDA080B-1A0G*
		1670mA	35V	48V	85%	PDA080B-1A6G
80W	0-10V	700mA	90V	114V	85%	PDA080W-700G*
		1050mA	55V	76V	85%	PDA080W-1A0G*
		1670mA	36V	48V	85%	PDA080W-1A6G

Note: *Non Class 2 Output per UL1310

80W

Features

- 120VAC to 277VAC input
- IP67
- Tc -40 °C to 80 °C
- EMI Class B



242mm x 43.5mm x 30.5mm



Rated Power	Dimmable	Nominal DC Output Voltage	DC Output Current		Typical Efficiency	Model Name
			Min.	Max		
80W	No	48V	0A	1.67A	87%	PDA080B-48VG
	0-10V	48V	0A	1.67A	87%	PDA080W-48VG

90W

Features

- Open frame design is easily integrated into custom fixtures
- 120VAC to 277VAC universal input
- 3 year warranty



169mm x 61mm x 31mm



Rated Power	Dimming	Nominal DC Output Voltage	DC Output Current		Typical Efficiency	Model Name
			Min.	Max.		
90W	No	24V	0.2A	3.75A	85%	PSM090-240P

100W

Features

- 120VAC to 277VAC input
- IP66
- Tc -40 °C to 83 °C
- EMI Class A



241mm x 59mm x 39mm



Rated Power	Dimmable	Nominal Output Current	DC Output Voltage		Typical Efficiency	Model Name
			Min.	Max		
100W	No	700mA	93V	143V	91%	PDA100B-700GB*
		1000mA	65V	100V	91%	PDA100B-1A0GB*
		1400mA	46V	72V	89%	PDA100B-1A4GB*
		1750mA	34V	57V	89%	PDA100B-1A8GB*
		2100mA	30V	48V	89%	PDA100B-2A1GB*
100W	0-10V	700mA	93V	143V	91%	PDA100W-700GB*
		1050mA	65V	100V	91%	PDA100W-1A0GB*
		1400mA	46V	72V	89%	PDA100W-1A4GB*
		1750mA	34V	57V	89%	PDA100W-1A8GB*
		2100mA	30V	48V	89%	PDA100W-2A1GB*

Note: *Non Class 2 Output per UL1310

COMMERCIAL LED DRIVERS

Standard Features

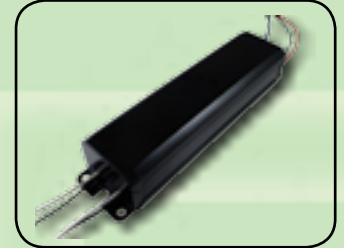
- Power Factor >0.90 and THD <20%

- 5 Year Warranty

100W

Features

- 120VAC to 277VAC input
- IP66
- Tc -40 °C to 83 °C
- EMI Class A



241mm x 59mm x 39mm



Rated Power	Dimming	Nominal DC Output Voltage	DC Output Current		Typical Efficiency	Model Name
			Min.	Max.		
100W	No	24V	0A	4.1A	89%	PDA100B-24VG
		48V	0A	2.08A	90%	PDA100B-48VG

125W

Features

- 120VAC to 277VAC input
- IP65
- Tc -40 °C to 75 °C
- EMI Class A



217.2mm x 68mm x 38mm



Rated Power	Dimmable	Nominal Output Current	DC Output Voltage		Typical Efficiency	Model Name
			Min.	Max		
125W	No	700mA	134V	179V	90%	PDA125B-700F
		1050mA	94V	125V	90%	PDA125B-1A0F
		1400mA	67V	89V	90%	PDA125B-1A4F
		2000mA	47V	62.5V	89%	PDA125B-2A0F
		2800mA	34V	44.6V	89%	PDA125B-2A8F
		3100mA	30V	40.3V	89%	PDA125B-3A1F
125W	0-10V	700mA	134V	179V	90%	PDA125W-700F
		1050mA	94V	125V	90%	PDA125W-1A0F
		1400mA	67V	89V	90%	PDA125W-1A4F
		2000mA	47V	62.5V	89%	PDA125W-2A0F
		2800mA	34V	44.6V	89%	PDA125W-2A8F
		3100mA	30V	40.3V	89%	PDA125W-3A1F

www.phihong.com/LED

125W

Features

- 120VAC to 277VAC input
- IP65
- Tc -40 °C to 75 °C
- EMI Class A



217.2mm x 68mm x 38mm

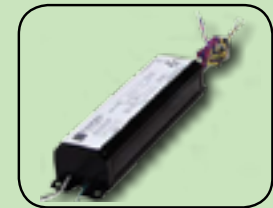


Rated Power	Dimmable	Nominal DC Output Voltage	DC Output Current		Typical Efficiency	Model Name
			Min.	Max		
125W	No	24V	0A	5.2A	86%	PDA0125B-24VF
		48V	0A	2.6A	87%	PDA0125B-48VF
	0-10V	24V	0A	5.2A	86%	PDA0125W-24VF
		48V	0A	2.6A	87%	PDA0125W-48VF

150W

Features

- 120VAC to 277VAC input
- IP66
- Tc -40 °C to 80 °C
- EMI Class B



241mm x 59mm x 39mm








Rated Power	Dimmable	Nominal Output Current	DC Output Voltage		Typical Efficiency	Model Name
			Min.	Max		
149W	No	350mA	0V	428V	92%	PDA150B-S350G
148W		530mA	0V	283V	94%	PDA150B-S530G
147W		700mA	0V	210V	94%	PDA150B-S700G
147W		1050mA	0V	143V	94%	PDA150B-S1A0G
150W		1500mA	0V	100V	94%	PDA150B-S1A5G
150W		1680mA	0V	89V	94%	PDA150B-S1A7G
149W	0-10V	350mA	0V	428V	92%	PDA150W-S350G
148W		530mA	0V	283V	94%	PDA150W-S530G
147W		700mA	0V	210V	94%	PDA150W-S700G
147W		1050mA	0V	143V	94%	PDA150W-S1A0G
150W		1500mA	0V	100V	94%	PDA150W-S1A5G
150W		1680mA	0V	89V	94%	PDA150W-S1A7G









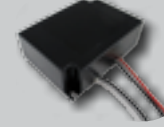
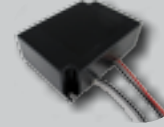


For more information including product datasheets visit the website www.phihong.com/LED

RESIDENTIAL LED DRIVERS

External Adapters

Watts	Constant Current Constant Voltage	Dimming		Model Series	Page
		No	Triac		
6W	Current	●		PDA006 	17
12W	Current	●		PDA012 	17
24W	Current	●		PDA024 	17

Watts	Constant Current Constant Voltage	Dimming		Model Series	Page
		No	Triac		
6W	Current	●		PDA006 	17
	Current	●		PDA006 	18
10W	Current	●		PDA010 	18
	Current		●	PDA010 	19
12W	Current	●		PDA012 	19
15W	Current	●		PDA015 	18

Watts	Constant Current Constant Voltage	Dimming		Model Series	Image	Page
		No	Triac			
15W	Current		●	PDA015		20
25W	Current	●	●	PDA025		20
25W	Voltage	●		PDA025		20
28W	Current	●		PDA028		21
30W	Current	●		PDA030		21
35W	Current	●		PDA035		21
40W	Current	●		PDA040		21
	Voltage	●		PDA040		21
	Current	●		PDA041		22
	Voltage	●		PDA041		22
60W	Current	●		PDA060		22
	Voltage	●		PDA060		22

RESIDENTIAL LED DRIVERS

Standard Features

- Power Factor >0.90 and THD <20%

- Class 2 Output per UL1310

External Adapters

Features

- 120VAC input wall plug input
- IP20
- EMI Class B



6W 12W 24W

66.5mm x
31mm x
38mm

71.5mm x
33.75mm x
46mm

90.5mm x
55.5mm x
38mm



Rated Power	Dimmable	Nominal Output Current	DC Output Voltage		Typical Efficiency	Model Name
			Min.	Max		
6W	No	350mA	9V	17V	73%	PDA006A-350S
		700mA	5V	8.6V	73%	PDA006A-700S
		1000mA	4V	6V	69%	PDA006A-1A0S
12W		350mA	17V	34V	77%	PDA012A-350S
		700mA	9V	17V	77%	PDA012A-700S
		1000mA	6V	12V	77%	PDA012A-1A0S
		1500mA	6V	8V	77%	PDA012A-1A5S
24W		700mA	33.8V	34V	82%	PDA024A-700S
		1000mA	16.8V	24V	82%	PDA024A-1A0S
	1500mA	11.2V	16V	82%	PDA024A-1A5S	

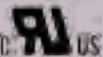
6W

Features

- 120VAC input
- IP67
- 3 year warranty
- Tc -20 °C to 80 °C
- EMI Class B



105.8mm x 39.8mm x 20.8mm

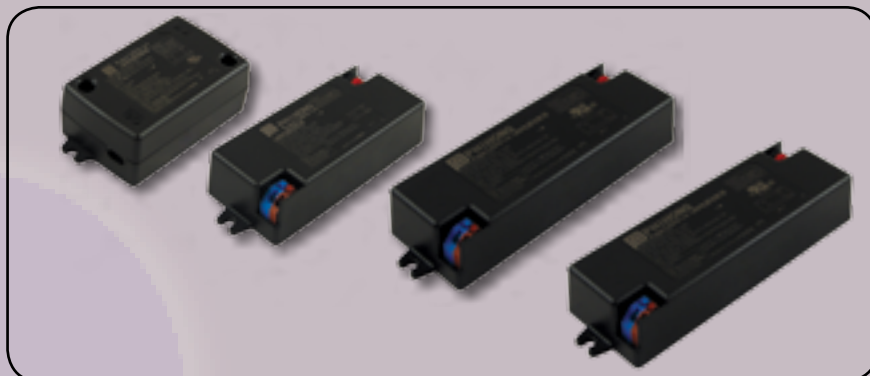


Rated Power	Dimmable	Nominal Output Current	DC Output Voltage		Typical Efficiency	Model Name
			Min.	Max		
6W	No	350mA	9V	17V	73%	PDA006A-350B*
		700mA	5V	8.6V	73%	PDA006A-700B
		1000mA	4V	6V	69%	PDA006A-1A0B

Note: *Tc -20 °C to 70 °C

Features

- 230VAC to 240VAC input
- Low profile design
- 3 Year warranty
- IP20
- Tc -20 °C to 80 °C
- EMI Class B



6W 10W 15W 30W

58mm x 35mm x 20.5mm	106mm x 40mm x 21mm	132mm x 40mm x 21mm	132mm x 40mm x 21mm
----------------------------	---------------------------	---------------------------	---------------------------



Rated Power	Dimmable	Nominal Output Current	DC Output Voltage		Typical Efficiency	Model Name
			Min.	Max		
6W	No	700mA	2.5V	7.5V	70%	PDA006A-700C*
10W		700mA	7.5V	12V	70%	PDA010A-700C
15W		350mA	17.5V	42V	77%	PDA015A-350C
30W		700mA	15V	42V	82%	PDA030A-700C

Note: *Tc -20 °C to 70 °C



6W 10W 15W 30W

58mm x 35mm x 20.5mm	106mm x 40mm x 21mm	132mm x 40mm x 21mm	132mm x 40mm x 21mm
----------------------------	---------------------------	---------------------------	---------------------------

Features

- 120VAC input
- Low profile design
- 3 Year warranty
- IP20
- Tc -20 °C to 80 °C
- EMI Class B



Rated Power	Dimmable	Nominal Output Current	DC Output Voltage		Typical Efficiency	Model Name
			Min.	Max		
6W	No	700mA	2.5V	7.5V	70%	PDA006B-700C
10W		700mA	7.5V	12V	70%	PDA010B-700C
15W		350mA	17.5V	42V	82%	PDA015B-350C
30W		700mA	15V	42V	82%	PDA030B-700C

RESIDENTIAL LED DRIVERS

Standard Features

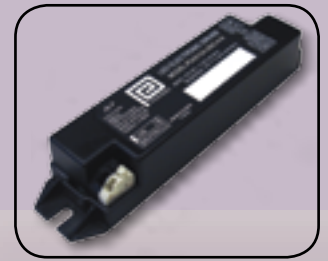
- Power Factor >0.90 and THD <20%

- Class 2 Output per UL1310

12W

Features

- 220VAC to 277VAC input
- 100K hours lifetime for 'H' models
- 3 Year warranty (8 years on 'H' models)
- Tc -40 °C to 80 °C
- EMI Class A



132mm x 30mm x 22mm



Rated Power	Dimmable	Nominal Output Current	DC Output Voltage		Typical Efficiency	Model Name
			Min.	Max		
12W	No	350mA	20V	34.3V	75%	PDA012A-350C
		350mA	20V	34.3V	75%	PDA012A-350C-H*

12W

Features

- 120VAC input
- 100K hours lifetime for 'H' models
- 3 Year warranty (8 years on 'H' models)
- Tc -40 °C to 80 °C
- EMI Class A



132mm x 30mm x 22mm

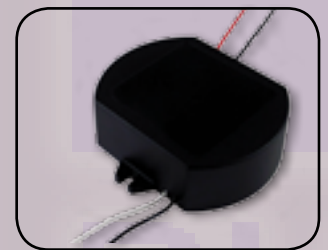


Rated Power	Dimmable	Nominal Output Current	DC Output Voltage		Typical Efficiency	Model Name
			Min.	Max		
12W	No	350mA	20V	34.3V	77%	PDA012B-350C
		350mA	20V	34.3V	77%	PDA012B-350C-H*

10W

Features

- 120VAC input
- IP67
- 3 year warranty
- Tc 0 °C to 90 °C
- EMI Class B



80mm x 78mm x 25.4mm

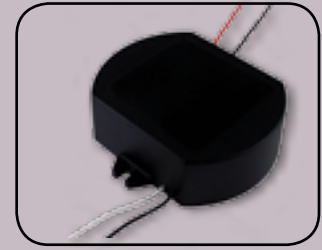


Rated Power	Dimmable	Nominal Output Current	DC Output Voltage		Typical Efficiency	Model Name
			Min.	Max.		
10W	Triac	350mA	21V	30V	78%	PDA010N-350B
		700mA	9.8V	14.3V	78%	PDA010N-700B
		1050mA	7V	10V	78%	PDA010N-1A0B

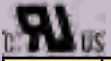
15W

Features

- 120VAC input
- IP67
- 3 year warranty
- Tc 0 °C to 90 °C
- EMI Class B



80mm x 78mm x 25.4mm

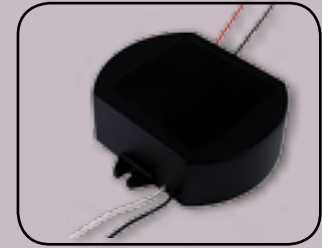


Rated Power	Dimmable	Nominal Output Current	DC Output Voltage		Typical Efficiency	Model Name
			Min.	Max.		
15W	Triac	350mA	29.4V	42V	81%	PDA015N-350B
		700mA	15.05V	21.5V	81%	PDA015N-700B
		1050mA	10.5V	15V	81%	PDA015N-1A0B

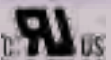
25W

Features

- 120VAC input
- IP67
- 5 year warranty
- Tc -40 °C to 90 °C
- EMI Class B



80mm x 78mm x 25.4mm



Rated Power	Dimmable	Nominal Output Current	DC Output Voltage		Typical Efficiency	Model Name
			Min.	Max.		
25W	Triac	350mA	45V	72V	84%	PDA025H-350A
		520mA	30V	48V	83%	PDA025H-520A
		700mA	24V	36V	83%	PDA025H-700A
		1000mA	16V	24V	82%	PDA025H-1A0A

25W

Features

- 120VAC to 277VAC input
- IP67
- 5 year warranty
- Tc -40 °C to 90 °C
- EMI Class B



80mm x 78mm x 25.2mm



Rated Power	Dimmable	Nominal Output Current	DC Output Voltage		Typical Efficiency	Product Name
			Min.	Max.		
25W	No	450mA	39V	55V	84%	PDA025B-450B
		700mA	25V	36V	84%	PDA025B-700B
		1040mA	17V	25V	83%	PDA025B-1A0B
		1400mA	12V	18V	82%	PDA025B-1A4B
		1750mA	10V	14V	82%	PDA025B-1A8B
		2100mA	8V	12V	81%	PDA025B-2A1B

Rated Power	Dimmable	Nominal DC Output Voltage	DC Output Current		Typical Efficiency	Model Name
			Min.	Max		
25W	No	24V	0A	1.04A	84%	PDA025B-24VB
		48V	0A	0.52A	84%	PDA025B-48VB

For more information including product datasheets visit the website www.phihong.com/LED

RESIDENTIAL LED DRIVERS

Standard Features

- Power Factor >0.90 and THD <20%

- Class 2 Output per UL1310

- ≥ 5 Year Warranty

28W-35W

Features

- 120VAC input
- IP66
- 3 year warranty
- Tc -40 °C to 80 °C
- EMI Class B



80mm x 78mm x 25.2mm



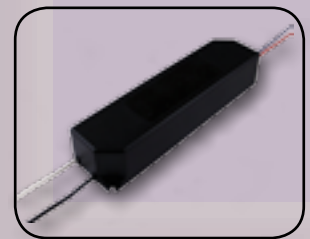
Rated Power	Dimmable	Nominal Output Current	DC Output Voltage		Typical Efficiency	Model Name
			Min.	Max.		
28W	No	1400mA	14V	21V	80%	PDA028A-1A4B
30W		2100mA	16V	14V	80%	PDA030A-2A1B*
35W		1040mA	26V	35V	82%	PDA035A-1A0B

Note: *Tc -40 °C to 80 °C

40W

Features

- 120VAC to 277VAC input
- IP67
- Tc -40 °C to 90 °C
- EMI Class B



162.5mm x 43mm x 32mm



Rated Power	Dimmable	Nominal Output Current	DC Output Voltage		Typical Efficiency	Model Name
			Min.	Max		
38W	No	700mA	37.8V	54V	89%	PDA040B-700B
40W		1050mA	26.6V	38V	88.5%	PDA040B-1A0B
37W		1400mA	18.2V	26V	88%	PDA040B-1A4B

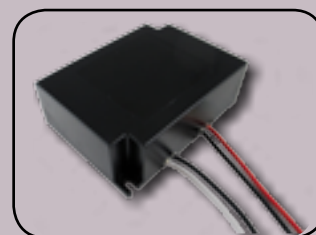
Rated Power	Dimmable	Nominal DC Output Voltage	DC Output Current		Typical Efficiency	Model Name
			Min.	Max		
40W	No	24V	0A	1.67A	88%	PDA040B-24VB
		48V	0A	0.83A	89%	PDA040B-48VB

www.phihong.com/LED

40W

Features

- 120VAC to 277VAC input
- IP67
- Tc -40 °C to 90 °C
- EMI Class B



95mm x 71mm x 32mm



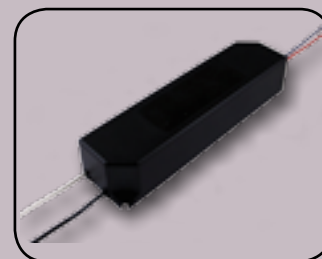
Rated Power	Dimmable	Nominal Output Current	DC Output Voltage		Typical Efficiency	Model Name
			Min.	Max.		
38W	No	700mA	39V	54V	89%	PDA041B-700B
40W		1050mA	28V	40V	88.5%	PDA041B-1A0B
37W		1400mA	18V	26V	88%	PDA041B-1A4B

Rated Power	Dimmable	Nominal DC Output Voltage	DC Output Current		Typical Efficiency	Model Name
			Min.	Max		
40W	No	24V	0A	1.67A	88%	PDA041B-24VB
		48V	0A	0.83A	89%	PDA041B-48VB

60W

Features

- 120VAC to 277VAC input
- IP67
- Tc -40 °C to 80 °C
- EMI Class B



162.5mm x 43mm x 32mm



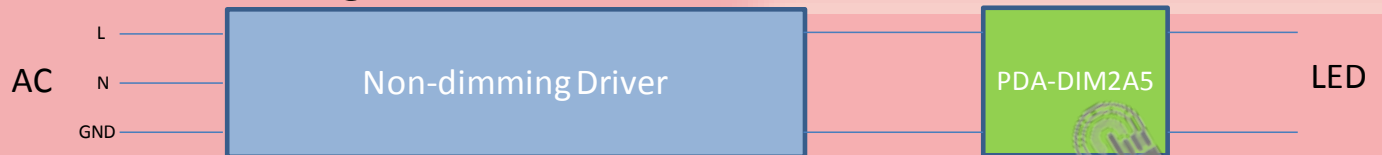
Rated Power	Dimmable	Nominal Output Current	DC Output Voltage		Typical Efficiency	Model Name
			Min.	Max		
60W	No	700mA	60V	85.7V	91%	PDA060B-700B*
		1070mA	39.2V	56V	91%	PDA060B-1A0B
		1400mA	30V	42.9V	90%	PDA060B-1A4B
		1600mA	26.3V	38V	90%	PDA060B-1A6B
		2000mA	21V	30V	90%	PDA060B-2A0B

Rated Power	Dimmable	Nominal DC Output Voltage	DC Output Current		Typical Efficiency	Model Name
			Min.	Max		
60W	No	24V	0A	2.5A	89%	PDA060B-24VB
		48V	0A	1.25A	91%	PDA060B-48VB

Note: *Non Class 2 Output per UL1310

LED CONTROL MODULES

Touch Dimming Module



Features

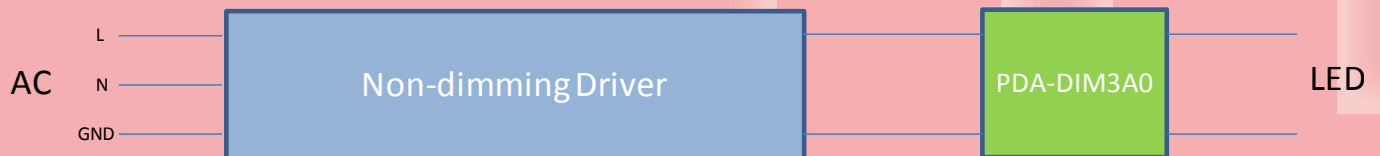
- 8-42.2V DC Constant Input
- <2.5mA Consumed at 12V and No Load
- Dimming Resolution of 200 steps
- On-board, Touch-hold Dimming Interface
- Tap On/Off
- PWM Out

Output Current Range		Model Name
Min.	Max.	
0A	2.5A	PDA-DIM2A5
0A	10A	PDA-DIM10A0



68mm x 35.5mm x 20.5mm

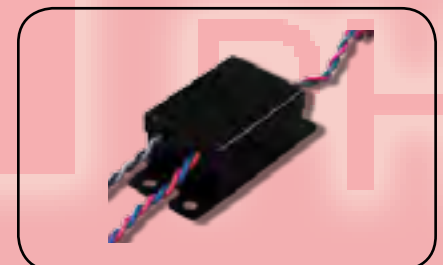
0-10V Dimming Module



Features

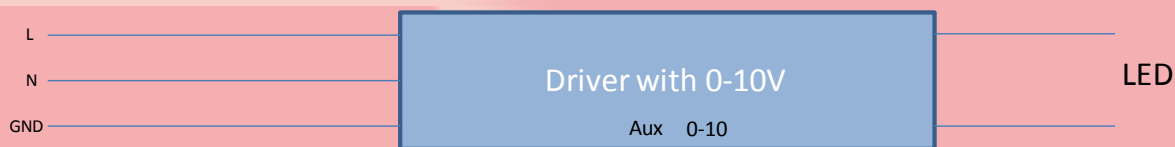
- 8-42.2V DC Constant Input
- <2.5mA Consumed at 12V and No Load
- Dimming Resolution of 200 steps
- On-board, Touch-hold Dimming Interface
- Tap On/Off
- PWM Out

Output Current Range		Model Name
Min.	Max.	
0A	2.5A	PDA-DIM3A0



43mm x 41.2mm x 31mm

Wifi Control Module



Features

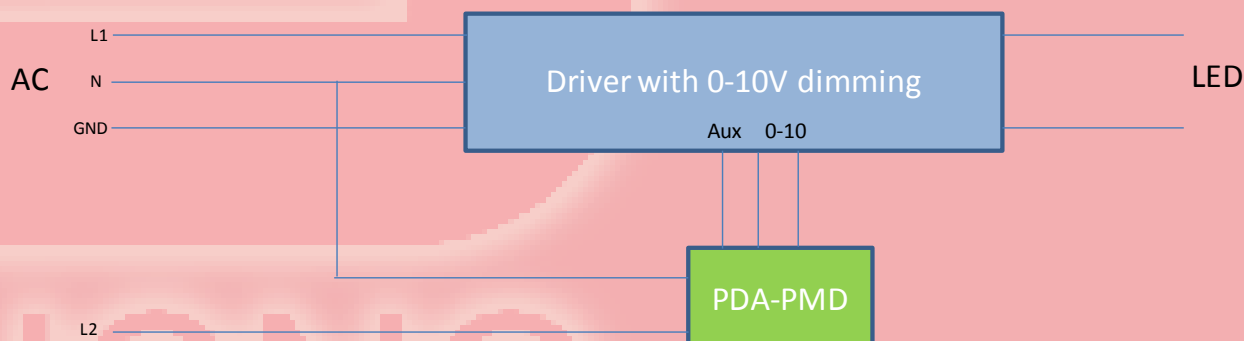
- Remotely Turn Lights On/Off
- Windows GUI accessible via Device Browser and Wifi-X
- Application with retrofit kits
- Control Luminaire via Remote Control
- Wifi Antenna Range 150m; 25m Range RF Controller
- GUI Control up to 64 Zones

Model Name
PDA-WIFI (Dimming Module)
PDA-WIFI-X (Wifi Module)
RCA-RF (Remote)



90.2mm x 43mm x 31mm

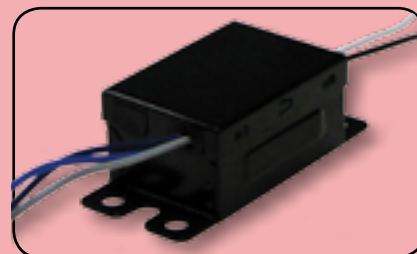
Bi-Level Dimming Module



Features

- Dimming 50% for 150uA Dimming Current
- Surge Rating 4KV - Level 4 (L-N)
- Wide Operating Temperature Range (-40C° -80 C°)
- Universal AC Input 90-305V
- 5 year warranty

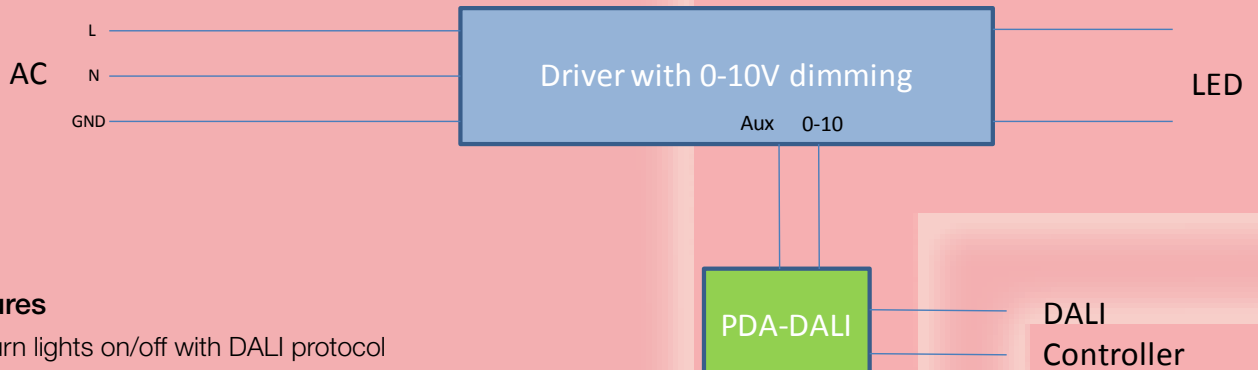
Model Name
PDA-PMD



90.2mm x 43mm x 31mm

LED CONTROL MODULES

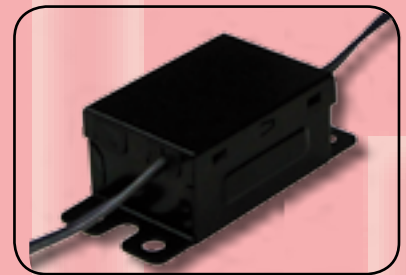
DALI Module



Features

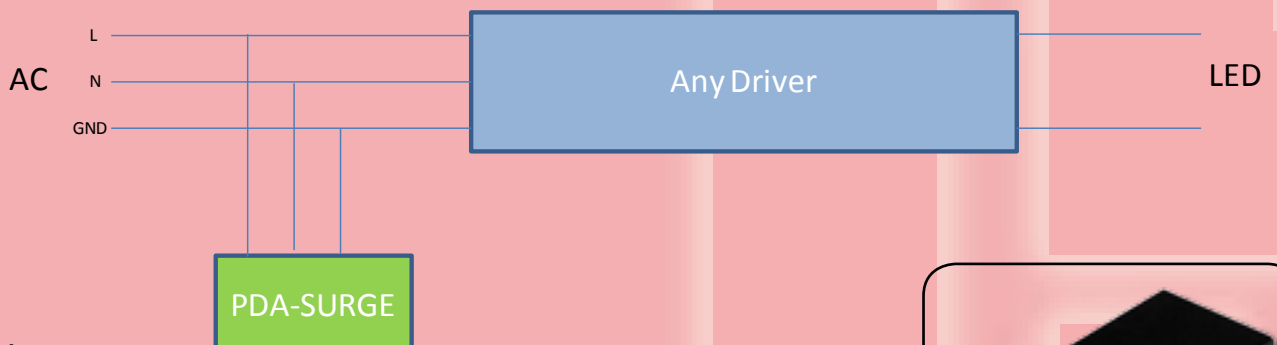
- Turn lights on/off with DALI protocol
- Connects with 0-10V Dimmable LED Drivers
- Up to 64 modules per installation
- Powered by DALI Bus
- Controls multiple lighting fixtures on one installation
- Each module can control up to 6 Fixtures

Model Name
PDA-DALI



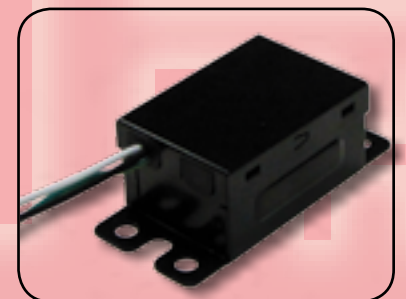
90.2mm x 43mm x 31mm

Surge Module



Features

- Compliant with UL 1449 3rd Edition
- IP67
- Surge Current Rating 10,000A
- Compliant with IEEE62.41.2
- Wide Operating Temperature range (-40°C - 80°C)

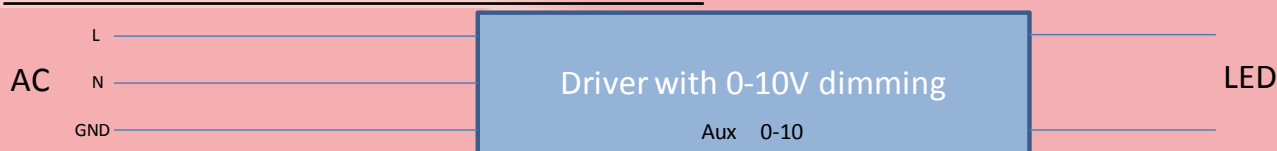


90.2mm x 43mm x 31 mm

Input Voltage	Input Current	Max Clamping Voltage	Max Surge Current	Surge Rating	Model Name
90-305 VAC	8A	6kV	13000A	445 Joules	PDA-SURGE



Lumen Maintenance Module



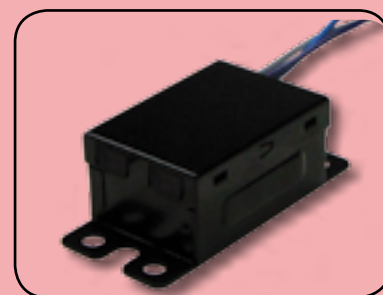
Features

- Increases output current to 100% over the preset life of the LEDs (50k hours)
- Dimming Level Increases 8V-10V
- Output Current Increases 80%-100% over Lifetime
- Wide Operating Temperature range (-40C° - 80C°)
- Real time countdown clock

Model Name
PDA-LUMEN

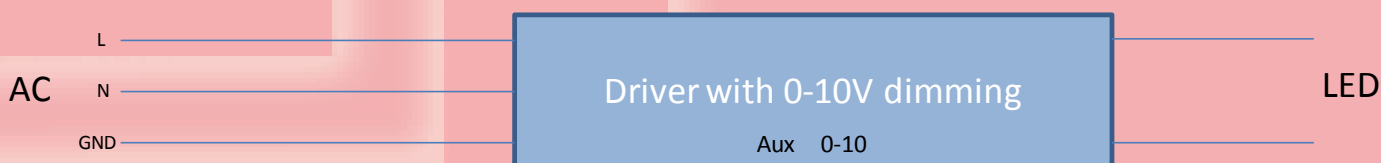


PDA-LUMEN



90.2mm x 43mm x 31mm

Daylight Harvesting and Motion Sense Module



Features

- Auto optical dimming option sets predetermined brightness to compensate for ambient light
- Seamless integration into existing luminaires
- Turn lights on/off with remote
- Set motion controls to dim lights automatically in empty spaces
- 4 Way Presence Detection
- 60° Light Sensor Angle
- 6m Occupancy Sensor Range and 90° Occupancy Sensor Angle
- Occupancy Time Out of 10 minutes

Model Name
PDA-ILIGHT (Module)
RCA-RF (Remote)



PDA-ILIGHT



54mm x 23mm x 20.7mm

Input Voltage Range	Current Consumption	Illumination Control Range	
		Min.	Max.
12-24 VDC	≤12mA	0	1000Lux

For more information including product datasheets visit the website www.phihong.com/LED



Powering Lighting Solutions

LED DRIVER ADAPTERS



BULB REPLACEMENT DRIVERS



CONSTANT CURRENT LED DRIVERS



LOW PROFILE DRIVERS



IP67 RATED DRIVERS



MULTIPLE-OUTPUT DRIVERS



EXTENDED LIFE DRIVERS



RETROFIT BULB DRIVERS



OPEN-FRAME POWER SUPPLIES



Headquarters:

Phihong Technology Co. Ltd.
No. 568, Fu Xing San Road
Gui Shan Tao Yuan Hsien, Taiwan, R.O.C.
Tel: 886-3-3277288
Fax: 886-3-3185999
E-mail: phsales@phihong.com.tw
www.phihong.com.tw

Worldwide Subsidiaries:

Phihong USA - Fremont, CA
Corporate Office
47800 Fremont Blvd.
Fremont, CA 94538, USA
Tel: 1-510-445-0100
Fax: 1-510-445-1678
E-mail: usasales@phihongusa.com
www.phihong.com

Phihong China - Shanghai
Building 17, No. 1515, GuMei Rd.
XuHui District, Shanghai 200233, P.R.C.
Tel: 86-21-6127-6218
Fax: 86-21-6127-6227
E-mail: phsales@phihong.com.tw

Phihong Europe - Netherlands
Wattstraat 50
2171 TR Sassenheim
The Netherlands
Tel: +31 (0)252 225910
Fax: +31 (0)252 218764
Email: sales@phihongeu.com

