

# User manual of USB 2.0 all-in-1 Card Reader

## PRODUCT INTRODUCTION:

This is a USB 2.0 all-in-1 card reader which has four sockets to access all the flash memory cards of various mechanical dimensions and electrical specifications available now.

The all-in-1 card reader can access the following flash memory cards:

- (1) CF socket for CF Type ( I, II ), Extreme CF, Extreme III CF, Ultra II CF, HS CF, XS-XS CF, CF Elite Pro, CF Pro, CF Pro II, IBM MD, Hitachi MD, Magicstor MD
- (2) SM socket for SM, SM ROM, T-Flash
- (3) 2-in-1 SD socket for SD, Extreme SD, Extreme III SD, Ultra II SD, SD Ultra X, Ultra speed SD, SD Pro, SD Elite Pro, HS SD,

MMC, HS MMC, Mini SD, HS Mini SD, MMC 4.0, HS RS MMC, RS MMC,  
RS MMC 4.0, DV-RS MMC

(4) MS socket for MS, MS Pro, MS MG, MS MG Pro, Extreme MS Pro,  
Extreme III MS Pro, Ultra II MS Pro, HS MS MG Pro, HS MS Pro,  
MS Rom, MS Select, MS Duo, MS Pro Duo, MS MG Duo, MS MG Pro Duo,  
HS MS MG Pro Duo, HS MS Pro Duo, M2

## 1 · Driver Installation for Windows 98 System

For Windows 98 system, vendor supplied drivers must be installed first before the device can be recognized.

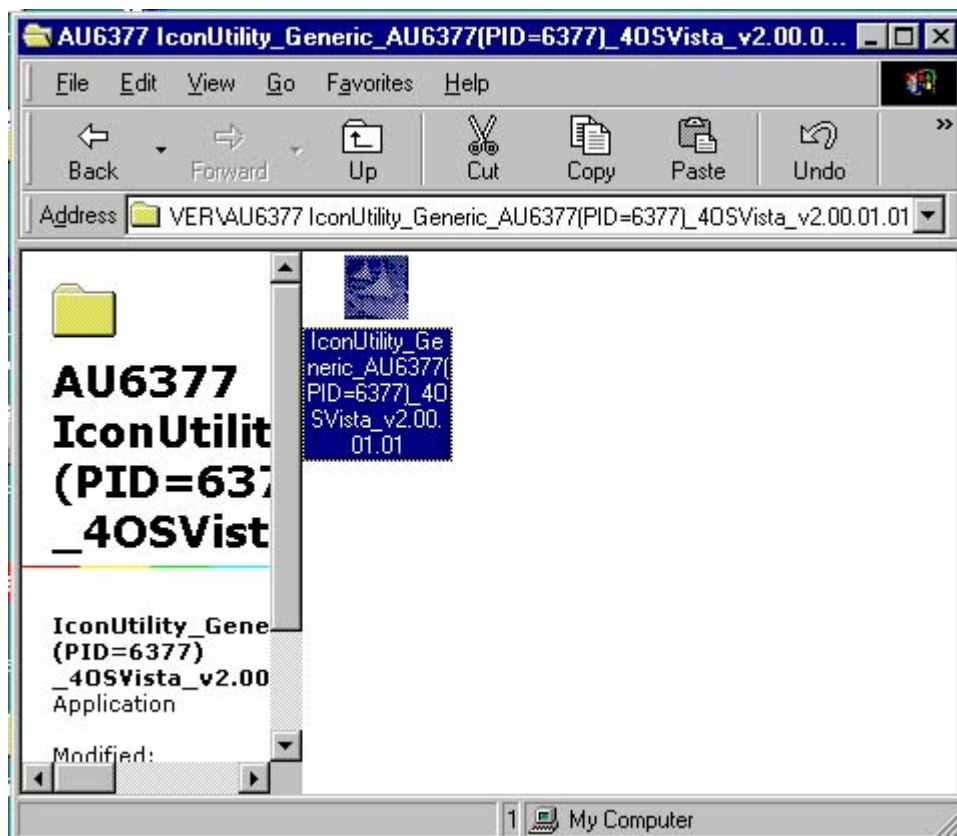
If you are using the Windows 98 System, please follow the installation steps below to complete the Card Reader driver installation first.

When the all-in-1 card reader is connected to a PC of Windows 98 with no driver installed, the “Add New Hardware Wizard” message window will pop up as the figure shown below:

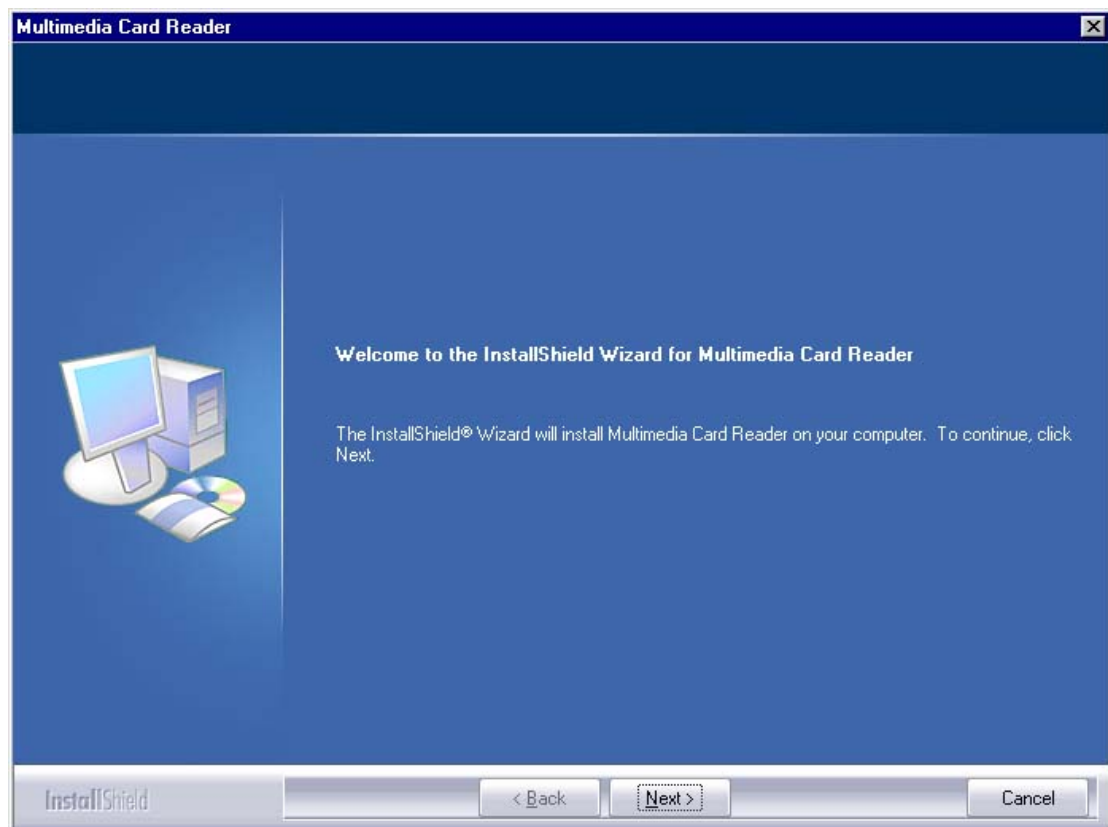


Click the “Cancel” button to close the window.

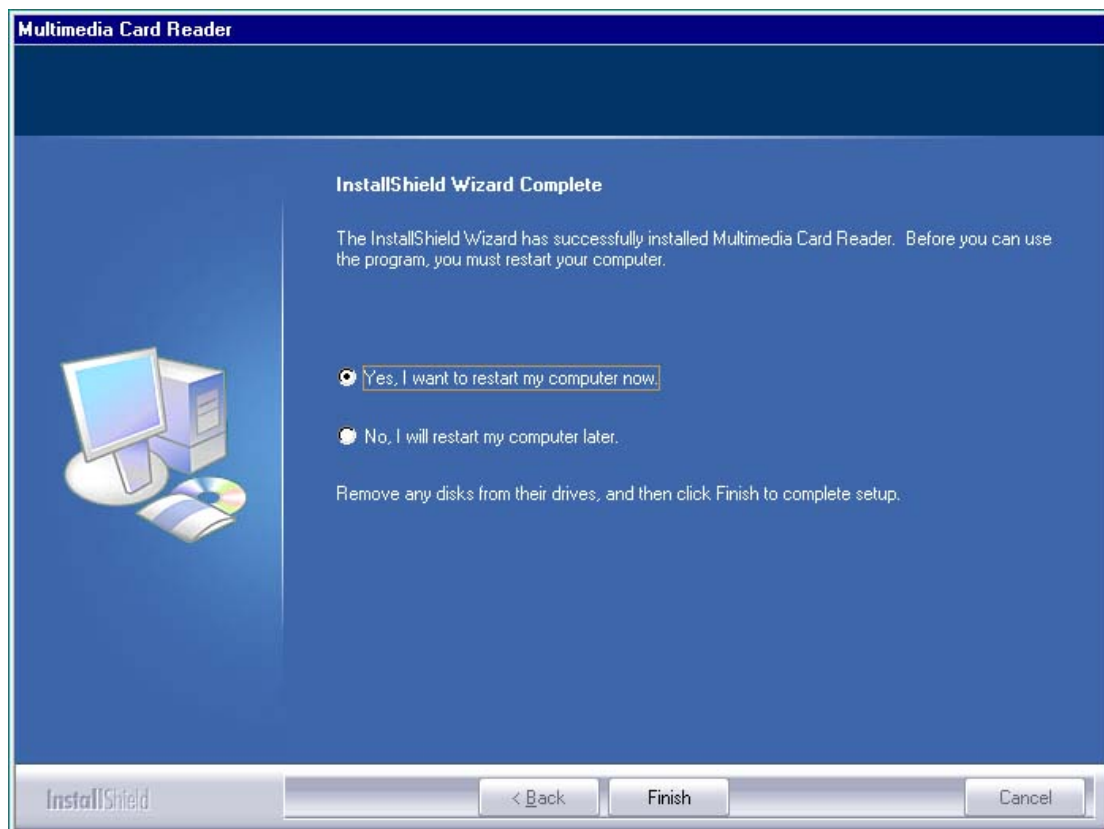
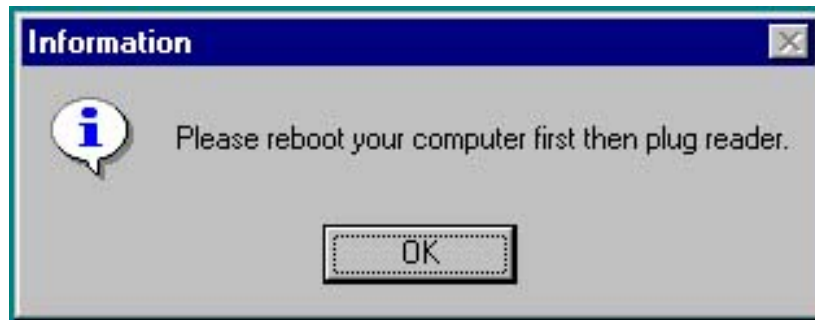
1. Put the Driver CD into the CD-ROM, and double click the icon “IconUtility\_Generic\_AU6377(PID=6377)\_40SVista\_v2.00.01.01.exe” to install the driver



2. Click “Next” on the welcome page of “InstallShield Wizard”

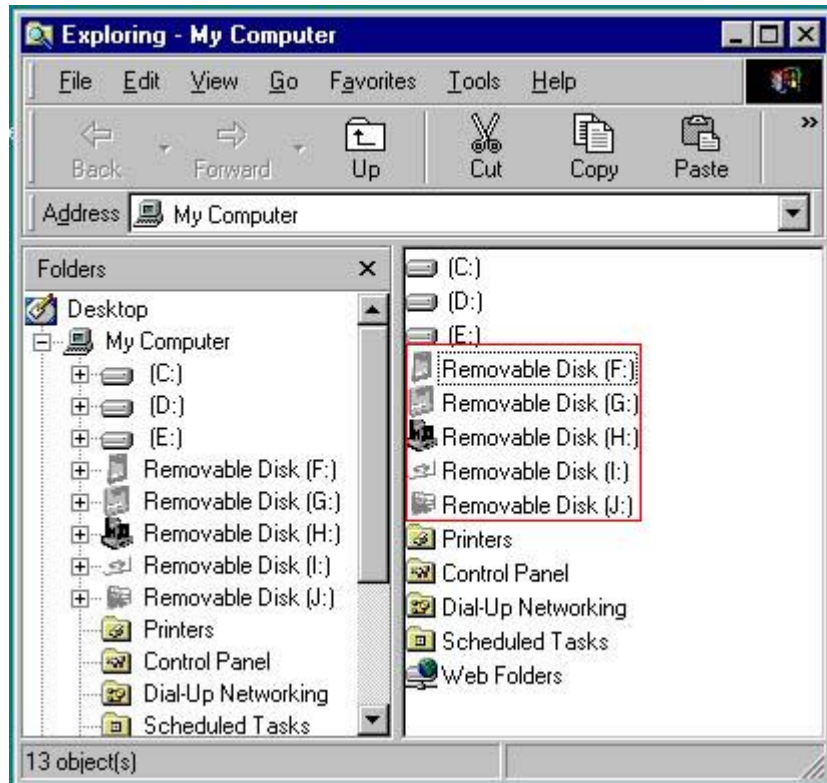


3. Reboot is required.



4. After the reboot, you will see five removable disk icons of the all-in-1 card reader on the explorer window once you connect the card reader to the PC. The disk drive letters (F:~J:) in the figure shown below are determined by the PC's configuration which may vary. But the sequence of removable disk drive is fixed as

(1) SD (2) CF (3) SMC/XD (4) MS (5) Micro SD



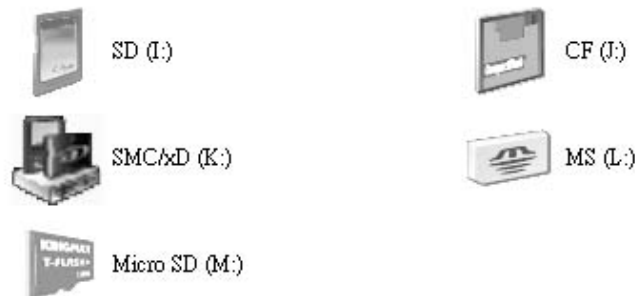
For Windows XP/2000 system, drivers are provided by the operating systems, no vendor-supplied driver needed. The card reader will be recognized by OS automatically once it is connected.

But it is recommended to perform the installation of AP as an update, to take the advantage of the visual icon identification

of the card sockets. However, it is not a must for these two OS.

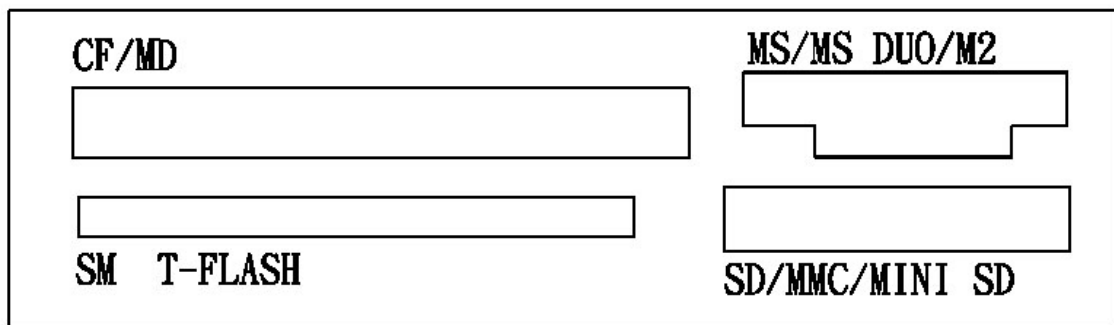
Before you install this driver, please make sure that the card reader is plugged into the PC, otherwise the driver installation will fail.

The installation steps Under Windows XP/2000 is similar to the installation steps Under Windows 98, please refer to the installation steps above and reboot your computer, then you will see five visual disk icons as below.



When you insert the memory card to the slot, please pay attention to the side of the card.

There are four card slots on the card-reader panel as below, only the CF & MD & M2 three cards should be head on.



Now the whole installation is done, thank you very much for using our product, we hope that our product can bring more convenience for you!